

[View this email in your browser](#)



ARTIFICIAL INTELLIGENCE

WE ASK ALL LEAGUES TO INCLUDE ARTIFICIAL INTELLIGENCE IN THEIR PROGRAM PLANNING.



We appreciate the responses, the

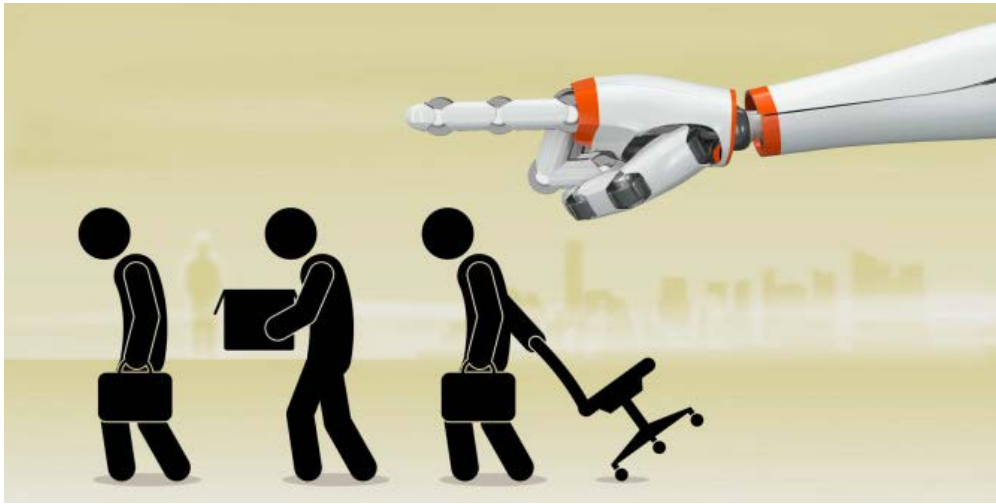
questions and the support we have received from Leagues across the country. As Leagues move forward with their program planning, we continue to ask for your support for a new national study on Artificial Intelligence at the coming National Convention in 2018.

We also ask you to share these messages with your membership so that at program planning time they will understand the need for this study.



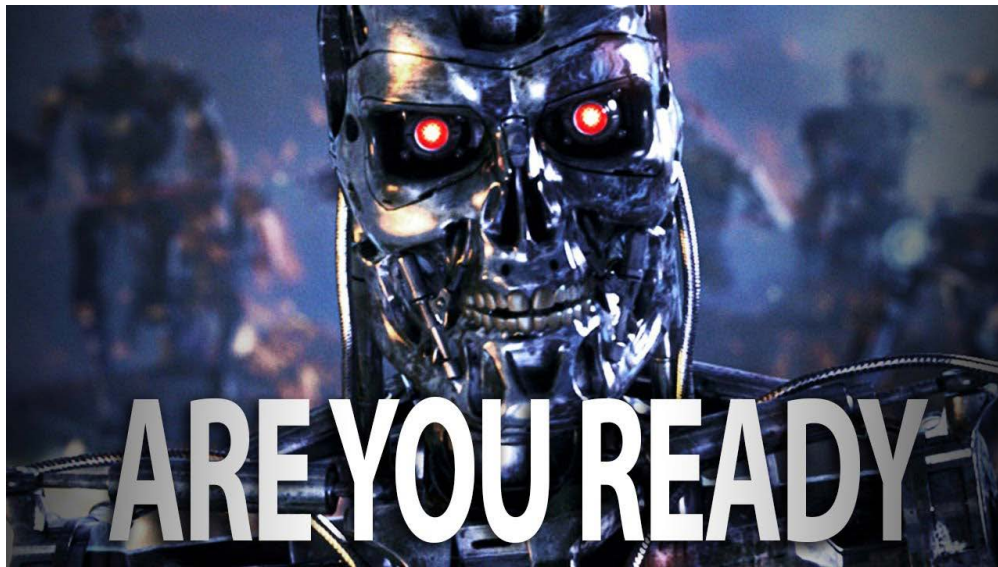
SOCIAL AND ECONOMIC POLICY MUST CATCH UP TO AI WHILE IT STILL CAN.

We know Artificial Intelligence is already impacting us in a myriad of ways. This technology will become even more embedded in our lives in the coming years. See, for example, [Visualizing the Massive \\$15.7 Trillion Impact of AI](#).



Already companies using robotics are becoming more common, using technology to be more productive and these companies have started to replace many workers with this technology. It will continue to impact large segments of our workers. See, for example, [Robots could replace 1.7 million American truckers in the next decade.](#)

Social and public policy is falling further and further behind the advance of Artificial Intelligence and its impact on society.



We need public policies that will be able to:

- Control the safety of this powerful technology
- Find a way to tax the labor of this technology
- Decide the ethical boundaries of this technology
- Provide a solution for workers displaced by this technology

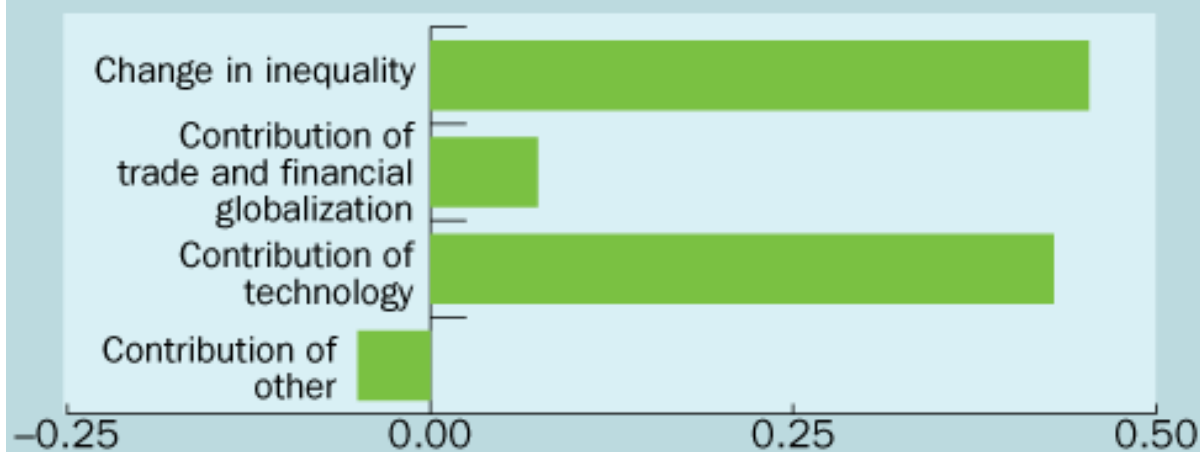
THE RISE OF AI HAS A DIRECT EFFECT ON OUR ECONOMY AND WE BETTER BE READY FOR IT.

The impact of all these changes can be seen in our economic statistics.

The great divide

Technological progress has contributed the most to widening income inequality.

(average annual percent change)



Source: IMF staff calculations.

The inequality in our population is growing. We have one of the highest differences between rich and poor of all the developed nations.

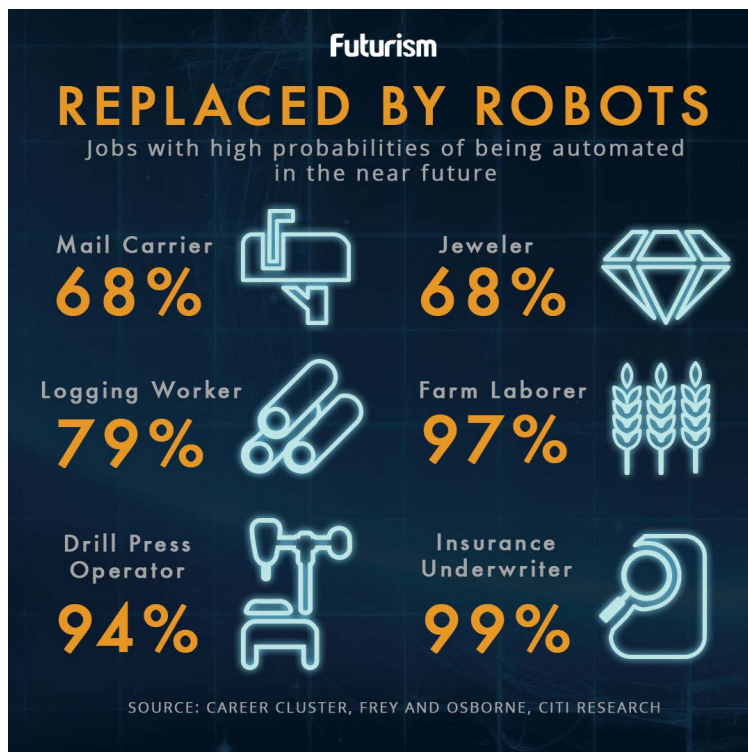
The Gini Index is a measure of statistical dispersion intended to represent the income or wealth distribution of a nation's residents, and is the most commonly used measure of inequality. The index range is from 0 to 1. A Gini

coefficient of zero expresses perfect equality, where all values are the same (for example, where everyone has the same income). A Gini coefficient of 1 (or 100%) expresses maximal inequality among values. (e.g., for a large number of people, where only one person has all the income or consumption, and all

The Gini Index for our country is .8.

While the poor get poorer-- the rich (and corporations) are increasing their wealth. The wealth of the top 10% of our population equals the wealth of the bottom 90%.

AI will continue this trend. It will allow corporations to increase their productivity at the



expense of workers; to avoid taxes and other costs associated with employing workers; and, as of today, to do so unchecked. We need policies making the use of this technology fair and safe for all.

Further Reading

MORE OF THE CONVERSATION.

The rise of AI and its impact on our society and our economy is an increasing topic of conversation. Below is an example of some of the conversations on the subject, with

links for further reading.



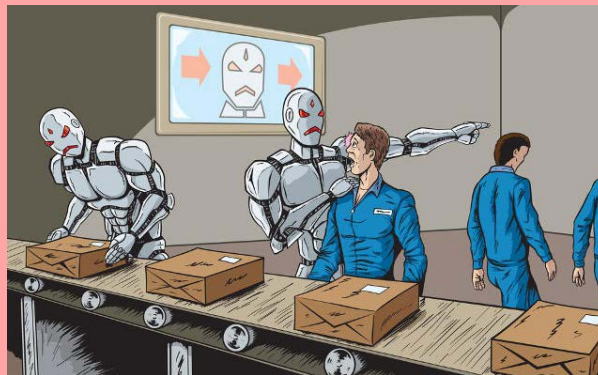
“The dangers inherent in AI

“But what about the other side of the coin? What negative impact could AI have? It’s clear that AI – like any technology – could be used for corrupt means. Adversarial AI (where inputs can be carefully crafted to trick AI systems into misclassifying data) has already been demonstrated. It could, for example, make an AI vision system that recognises a red traffic light, perceive a green one instead – which could have disastrous ramifications for an autonomous vehicle.

“The Adversarial AI scenario is an example of AI getting hacked. But let’s take it further; what if we have AI itself doing the hacking? That’s

not a worst-case scenario – it’s a likelihood.” [Artificial Intelligence is Now an Arms Race. What if the Bad Guys Win?](#) (World Economic Forum)

“According to [President Obama’s Council of Economic Advisers \(CEA\)](#), approximately



3.1 million jobs will be rendered obsolete or permanently altered as a consequence of artificial intelligence technologies. Artificial intelligence (AI) will, for the foreseeable future, have a significant disruptive impact on jobs. That said, this disruption can create new opportunities if policymakers choose to harness them—including some with the potential to help address long-standing social inequities. Investing in quality training programs that deliver premium skills, such as computational analysis and cognitive thinking, provides a real opportunity to leverage AI’s disruptive power.” [Leveraging Artificial Intelligence for](#)

Fairer Opportunities, (Brookings Institution)

Elon Musk, Stephen Hawking warn of artificial intelligence dangers

“For years, experts have warned against the unanticipated effects of general artificial intelligence (AI) on society. Ray Kurzweil predicts that by 2029 intelligent machines will be able to outsmart human beings. Stephen Hawking argues that ‘once humans develop full AI, it will take off on its own and redesign itself at an ever-increasing rate’. Elon Musk warns that AI may constitute a ‘fundamental risk to the existence of human civilization’. Alarmist views on the terrifying potential of general AI abound in the media.” Moral Machines: Here are Three Ways to Teach Robots Right from Wrong, (World Economic Forum)

Thank you all for your time and consideration.



Happy New Year to you,
your families and all of your
members!

The League of Women Voters of Palos Verdes Peninsula/San Pedro



Copyright © 2017 League of Women Voters/PVP, All rights reserved.

Want to change how you receive these emails?

You can [update your preferences](#) or [unsubscribe from this list](#).

MailChimp